



## Introduction

When the first case of foot and mouth was confirmed in Guildford, a chill went through the whole farming community. Memories came flooding back from 2001. At CIS we took immediate action by stopping all farm visits which were only resumed once the hazard had been assessed, and also only at the farmers discretion. I would like to thank all CIS members for working with us and ensuring that the very highest standards of bio-security were adhered to.

## Update

CIS continues to grow, the average size of herds recorded now stands at 153 and there have been 20,000 more cows recorded per month over the same period last year. Both new and existing web users have embraced the management tools that are available **free of charge** to all milk recorded herds, which is great news.

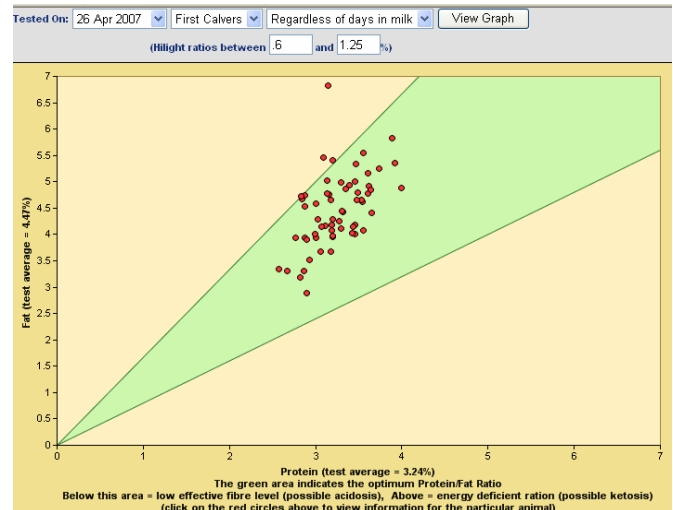
## [www.thecis.co.uk](http://www.thecis.co.uk)

One of the great benefits of our web site is that its development is fluid. This allows us to continually add farmer driven enhancements and introduce new dynamic tools. This saves costly software for new versions, and our tools help you pinpoint problems, and act before there are any visible physical signs. I would like to take this opportunity to give you a brief overview of the package and invite you to contact us. It's best if you request an on farm demo and take the opportunity to discuss how these tools can save you valuable time and money.

## Ketosis/Acidosis Graph

The Ketosis and Acidosis graph is another ground breaking option that is available to all farmers who record with CIS. Both are metabolic disorders that affect predominantly high producing dairy cattle in early lactation. By monitoring fat and protein levels and deviations it is possible to highlight animals within the herd that maybe showing both early and advanced cases of these disorders. The graph will also plot the

position of the herd, highlighting early indications of nutritional imbalances.



Particular benefits of this programme is the interactive nature of it; all 'spots' on the graph are identifiable as individual animals, which can then be tracked for components through the course of their lactation.

The need for concern is also highlighted on a star rating- more stars mean the animal is likely to be suffering either ketosis at the top of the graph, or acidosis on the lower peripheries.

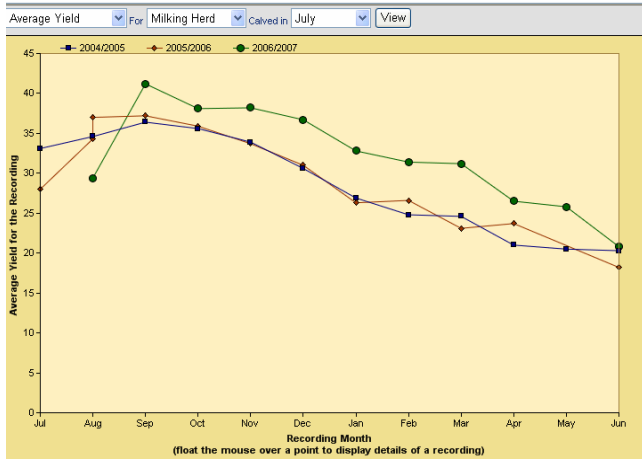
Line No	EarTag	Lact No.	Calved	Ratio	Yield kg	Protein %	Fat %		
473	167033700473	1	19 Jan 2007	0.46	23.40	3.14	6.82	Possible Ketosis	**
239	166343500239	4	14 Mar 2007	0.47	35.40	2.48	5.31	Possible Ketosis	**
47	166343200047	4	02 Aug 2006	0.51	25.20	2.81	5.55	Possible Ketosis	*
123	91229022123	5	13 Mar 2007	0.52	43.20	2.76	5.34	Possible Ketosis	*
332	166343700332	2	18 Jul 2006	0.56	21.60	3.33	5.98	Possible Ketosis	
39	166343100039	4	08 Sep 2006	0.56	27.40	2.89	5.16	Possible Ketosis	

## Day2Day Health Monitor

Day2Day enables all farmers to access their records and animals and then produce rank able listings of animals needing immediate attention. Up until now this has mainly concentrated on fertility issues within the herd, but this enhanced version includes a new health monitor. This highlights cows that have had sudden changes in SCC or drastic drops in levels of butterfat, protein or milk, indicating individual cows that need attention.

## Brinkmanship Curves

This visual graph monitors your herd's performance as a whole or by calving month, for yield, butterfat, protein, SCC and urea. The main purpose is to review the production over the last 3 years, pinpointing vulnerable times of year and calving groups.



## Weight and Heights

Using CIS services does not only aid the management of the milking herd, but also aids your future herd. The new weights & heights data entry is very useful for measuring the growth progress of your young stock, enabling the best service period to be chosen.

Your Herd - Record Youngstock Heights and Weights step 2 of 2 - Enter the height

Heights and Weights measured on 27 Jun 2007 for YS of all ages

Ear Tag	Weight (kgs)	Height (cms)	Age (months)	Line No	Last Served
263497201449	240		8	449	
263497301450			8	1450	
263497401451	250		8	451	
263497501452	240		8	452	
263497601453			8	1453	
263497701454	220		8	454	
263497301457	230		8	1457	
263497401458			8	458	
263497701461	245		8	461	
263497101462	245		8	1462	

<< Previous Page Save Next Page >> Page: 18 of 25 Run Report

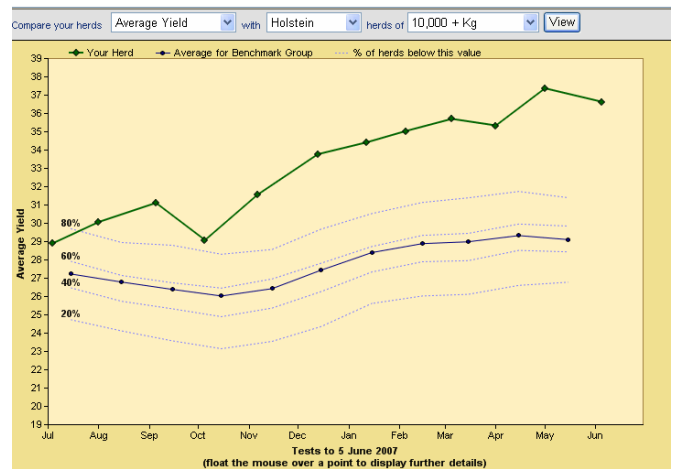
(click on the eartag to view an animal's weight/height history)

## KPI & Benchmarking

Dairy benchmarking has progressed from a simple way of keeping up with the Jones' into an effective tool to improve an individual dairy's management. CIS has introduced two new web tools that will encourage users to measure their herd performance; both areas have the facility to select the comparison group, from a range of herd sizes and production groups.

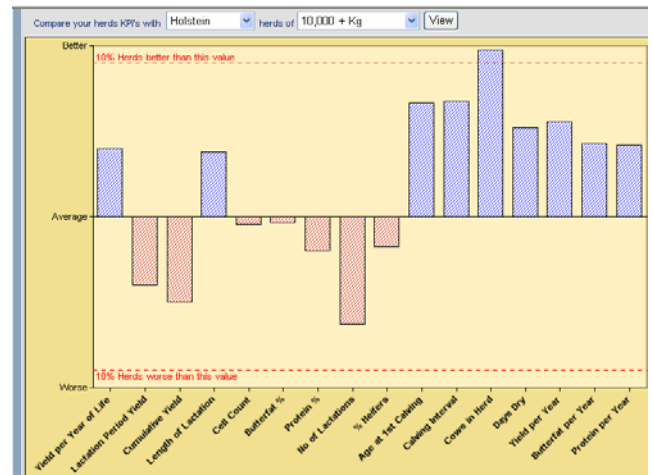
## Benchmarking Trend Graph

This graph demonstrates herd production performance over the previous 12 months, with guidelines of your position within the group.



## Key Performance Indicator

Illustrated here is a snapshot of your herd's performance and a comparison against your contemporaries.



## Autumn Dairy Shows

One of the highlights in our calendar is the season of autumn dairy shows as we always look forward to meeting up with customers both old and new, to discuss service options and to catch up on the local news! So we are all very disappointed that the Dairy Farming Event has been cancelled. We hope this event is the only casualty and others may continue, albeit at a later date.

If you would like further details of the CIS services on offer, please speak to your Area Manager or contact the office on 01923 695 319.